

*Distortion***The SOLO Based on suhr riot Distortion. .****OVERVIEW:**

SOLO is a versatile high-gain distortion pedal with the sonic characteristics and touch sensitivity of a high quality 100 watt tube amplifier. SOLO will transform a super clean amp into an authoritative rock tone that inspires all of your favorite riffs.

**CONTROLS**

**DIST:** Adjusts the amount of gain added to your tone, taking you from classic crunch to high-gain heaven.

**LEVEL:** Adjusts the output of the pedal. Riot provides enough level to push the front end of any tube amp into natural overdrive.

**TONE:** Shapes the overall tonal response of the pedal, from smooth and warm to cutting lead tones.

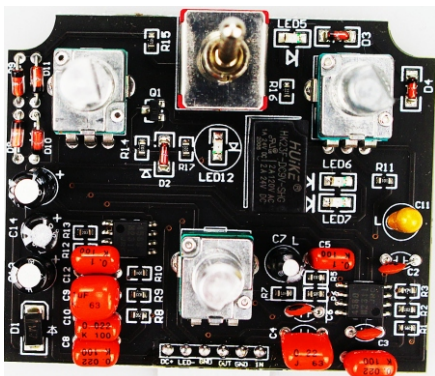
**VOICING SWITCH**

**UP:** Produces a natural, organic tone that responds dynamically to your guitars volume control.

**Middle:** Puts you into high gain territory with a solid midrange, with a tight bottom end.

**DOWN:** Produces a vintage high gain response, with excellent definition.

**LED:** LED illuminates Red when effect is activated.

**OPERATION:**

Install a 9V battery in the unit (see below) or plug in a suitable 9Vdc, center negative power supply. Plug your guitar into the input jack and connect your amp to the output jack.

Input Impedance:1M ohm

Output Impedance:600 ohm

Power Connector:9Vdc, center negative, 2.1mm x 5.5mm

Dimensions:11.5\*6.5\*5.5CM

Weight:0.28KG

**PACKAGING**

1\*SOLO

**DESIGN BY USA**