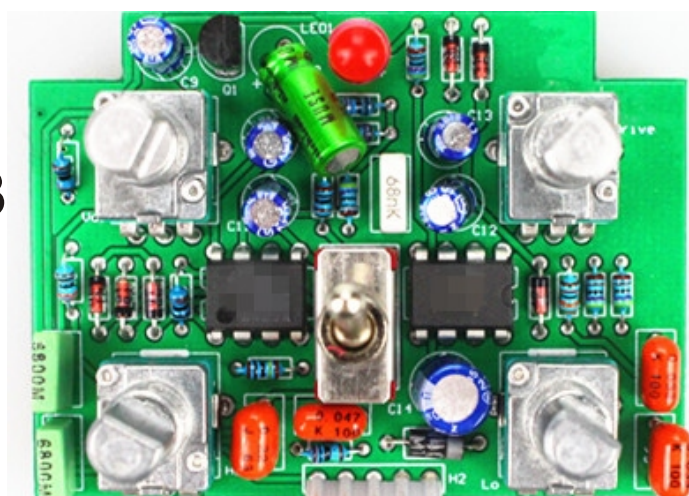


OVERDRIVE

This amazing pedal is designed and built by handmade and using the best quality components and using the plug-in (not SMD) components .

The KING SPARK Overdrive provides a versatile range of overdrive tones that enhance the natural sound of your guitar and amp setup

External Controls**Internal PCB**

- 1 FOOTSWITCH toggles effect on/bypass (LED indicates on)
- 2 LEVEL knob adjusts overall volume of effect
- 3 BASS knob cuts low end frequencies from pre-overdrive signal
- 4 CLIP switch sets clipping mode
- 5 DRIVE knob adjusts overdrive intensity
- 6 TREBLE knob cuts high end frequencies from post-overdrive signal
- 7 Power supply: DC9V Center negative

DEMONFX ELECTRONICS
DESIGN BY USA
WWW. DEMON-FX. COM